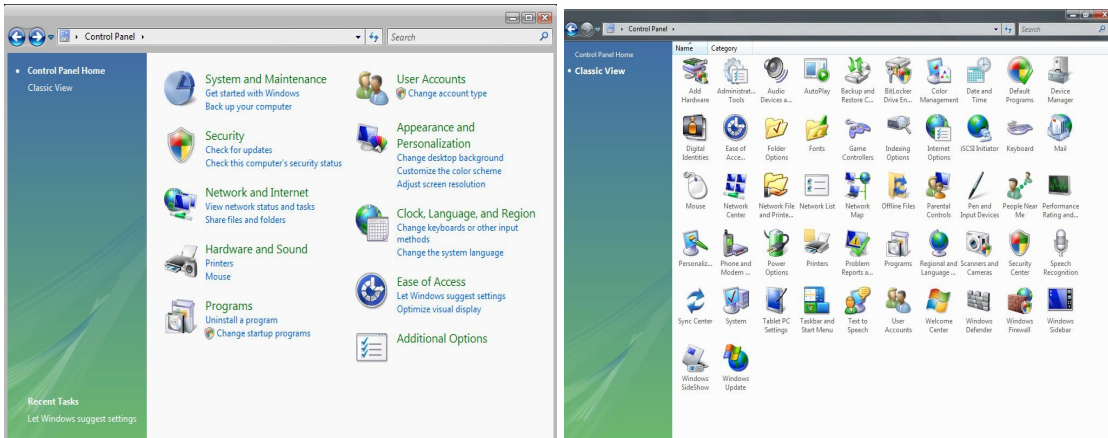


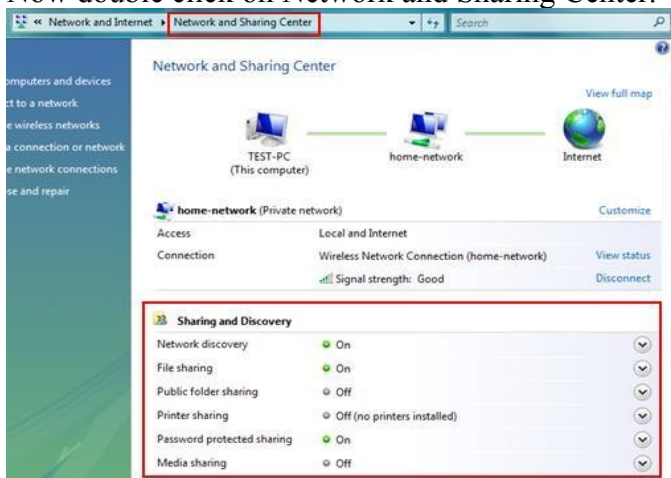
Wireless Trouble Shooting Tips for Windows Vista

(Always reboot the computer and try again, also make sure your wireless card is turned on, and finally make sure Norton Internet Security is disabled before resorting to these steps. Also remember when working with Vista if a User Account Control window pops up during any of these steps just hit ok.)

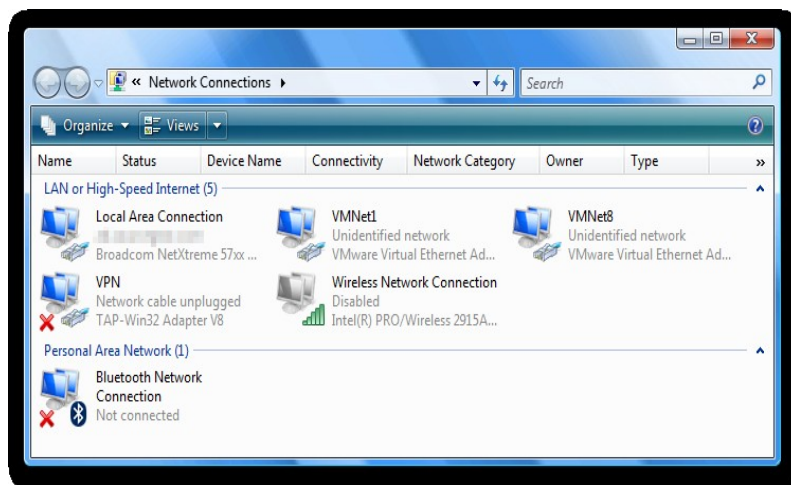
1. Click on the Windows button in the bottom left hand corner of the screen, from here click on Control Panel.



2. The screen should match one of the pictures above. If it matches the picture on the right you are ready for step three, if it's the picture on the left that your computer matches then click Switch to Classic View. It is located in the top left hand corner in the Control Panel box.
3. Now double click on Network and Sharing Center.



4. Now you should see a screen like the one above. From this screen click on Manage Network Connections it is in a small font and fairly hard to see, but it is on the left hand side of the screen.



5. You should have a window that appears similar to the above picture on the desktop. Each icon is a connection on the PC. One of the connections should say wireless either in bold or kind of grayed out below the name of the connection.
6. Right click this icon, make sure that it is enabled. To do this it should either say Disable or Enable when you right click the icon. If it says Disable the connection is enabled, likewise if it says Enable the connection is disabled and you will need to left click on the word Enable.
7. If the connection was disabled minimize this window and try to connect to the Internet, if the connection was enabled or enabling the connection did not solve the problem continue on to the next step.
8. Right click the wireless icon and go down where it says repair and left click the word Repair. After clicking this it should automate trying to flush the DNS and getting a new IP address. After this completes once again try to connect to the Internet to see if the problem has been solved if not continue to step nine
9. If our previous options did not solve the issue right click each of the icons that are not the wireless icon and click Disable. If the icon says Enable when you right click just leave it alone. Again try to log on to the Internet and see if this fixed the problem.
10. If the problem is still occurring please contact Steve <mailto:erichsens@casscolibrary.org>.

[Return To Our Home Page](#)